

CAT6 SIAMESE CABLE

(2) 4P x 23-AWG CAT6 UTP (CMR)

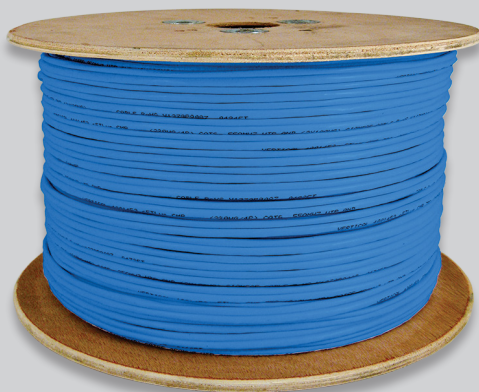


DESCRIPTION

CAT6 Siamese Cable, CMR, UTP,
(2) 4P x 23-AWG CAT6 Solid Bare Copper,
550 MHz Bandwidth

FEATURES

- Dual High Performance CAT6 Cable
- Supports 10/100/1000BASE-T applications
- 550 MHz Bandwidth for Data applications
- 23-AWG UTP Solid Bare Copper Conductors
- Unshielded Twisted Pairs
- Exceeds ANSI/TIA-568.2-D and ISO/IEC 11801 specifications
- CAN/CSA-C22.2 No. 214, RoHS compliant
- CMR Rated
- ETL listed



294-2176

TRANSMISSION PERFORMANCE

Meets or exceeds ANSI/TIA-568.2-D and ISO/IEC 11801 specifications

CONSTRUCTION

Components: x2 CAT6
Rip Cord: x2 (Nylon)

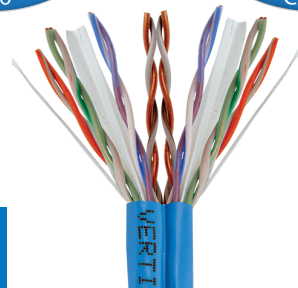
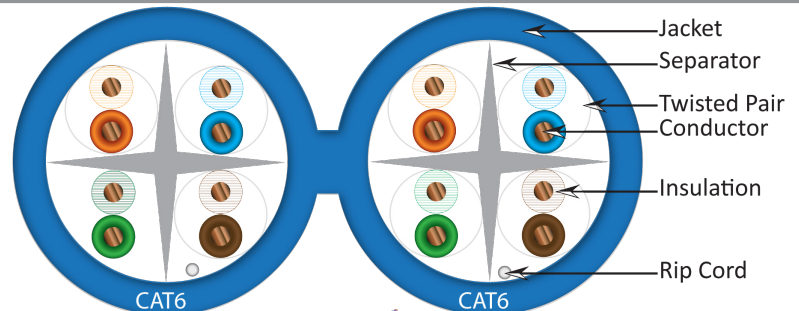
COMPONENT 1 (4P x 23-AWG CAT6)

Conductors: 4 Pairs 8 Conductors Solid Bare Copper
Insulation Diameter: 0.0397 in. (1.01 mm)
Insulation Material: Polyethylene (PE)
Jacket Color: Blue
Screen: Unscreened
Outer Diameter: 0.24 in. (6.20 mm)
Jacket Thickness: 0.0236 in. (0.60 mm)
Jacket Material: Polyvinyl Chloride (PVC)
UTP Insulation Color Coding: Pair 1: Orange/White with Orange Stripe
Pair 2: Blue/White with Blue Stripe
Pair 3: Brown/White with Brown Stripe
Pair 4: Green/White with Green Stripe

COMPONENT 2 (4P x 23-AWG CAT6)

Conductors: 4 Pairs 8 Conductors Solid Bare Copper
Insulation Diameter: 0.0397 in. (1.01 mm)
Insulation Material: Polyethylene (PE)
Jacket Color: Blue
Screen: Unscreened
Outer Diameter: 0.24 in. (6.20 mm)
Jacket Thickness: 0.0236 in. (0.60 mm)
Jacket Material: Polyvinyl Chloride (PVC)
UTP Insulation Color Coding: Pair 1: Orange/White with Orange Stripe
Pair 2: Blue/White with Blue Stripe
Pair 3: Brown/White with Brown Stripe
Pair 4: Green/White with Green Stripe

CONTINUED ON NEXT PAGE...



VERTICAL CABLE

951.696.7772 California
800.749.2447 Florida
845.391.8318 New York

verticalcable.com



Rev. 2/2024
Subject to change without notice.

CAT6 SIAMESE CABLE

(2) 4P x 23-AWG CAT6 UTP (CMR)

CONTINUED FROM PREVIOUS PAGE...

OVERALL JACKET

Material: Polyvinyl Chloride (PVC)
Outer Diameter: 0.50 in. (12.50 mm)
Marking: VERTICAL 4001453 cETLus VERIFIED CMR UTP DUAL
4PR 23 AWG CAT6 550 MHz ANSI/TIA-568.2-D RoHS

ELECTRICAL

1.0-350 MHz Impedance: 100Ω
1.0350 MHz Delay Skew: ≤45 ns/100m
Maximum Capacitance Unbalance: ≤330 pF/ft.
Max Conductor D.C.R.: 72.2 Ω/km @ 20°C
Maximum D.C.R. Unbalance: ≤5%
Voltage Rating: 30V

MECHANICAL

Before Tensile Strength (Mpa): ≥13.8
Aging Elongation (%): ≥100
Aging Condition (°Cxhrs): 100x168
After Tensile Strength (Mpa): ≥85% of unaged
Aging Elongation (5): ≥50% if unaged
Cold Bend (-20±2°Cx4hrs): No Crack

ENVIRONMENTAL

Operating temperature: -4 °F–167 °F (-20 °C–75 °C)

WEIGHT

70 lb (31.7 kg)

VERTICAL CABLE

951.696.7772 California

800.749.2447 Florida

845.391.8318 New York



verticalcable.com

Rev. 2/2024

Subject to change without notice.