

COMPONENTS AND ACCESSORIES



Splicing

Mechanical Splice Holders

265-HLD13-2B4-n Optical fiber mechanical splice holder, 12-fiber

Substitute "-n" in PN with:

"A": 2 splices;

"B": 4 splices;

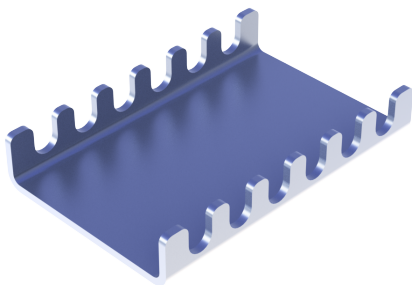
"C": 6 splices;

"D": 8 splices;

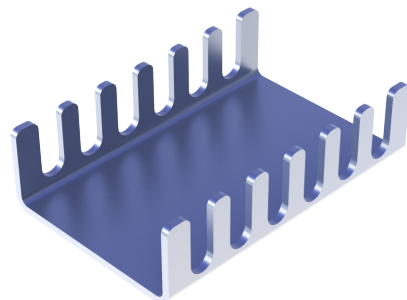
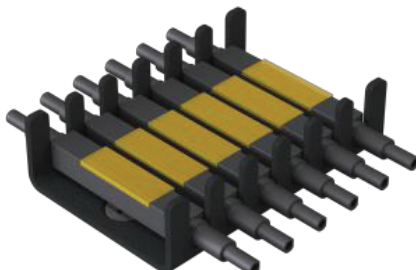
"E": 12 splices.

CHARACTERISTICS

Compatible splice:	VC _{fiber} 265-MEC01 mechanical splice.
Material:	aluminum alloy 5052-H32 or equivalent.
Finish, color:	black powder coating.
Mounting type:	M3 CSK machine screw (included); four two-sided adhesive pads.
Capacity:	6 slots × 2 splices/slot = 12 splices.
Dimensions:	26 mm × 40 mm × 11 mm (1.0 in × 1.6 in × 0.4 in.).
Weight:	3.9 g (0.14 oz) without splices.
Storage temperature:	-45 °C—+85 °C (-49 °F—+185 °F).
Operating temperature:	-40 °C—+70 °C (-40 °F—+158 °F).
Operating humidity:	≤95 % RH non-condensing.



SIX SPLICES



TWELVE SPLICES STACKED

