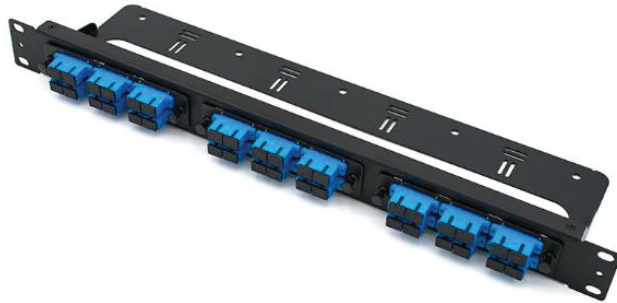


## Rack-Mount Panels

### Adapter Plate Panels

266-PMD01-1A3A Optical Fiber Rack-Mount Panel, LGX, Three-Position, 1 RMU



#### KITTING

##### As-delivered:

- 1 × panel with integral cable management bar;
- 1 × set of mounting screws (see characteristics);
- 1 × shipping box.

##### Not included:

- adapter plates (page 28)

#### CHARACTERISTICS

Form-factor:	19-in rack/cabinet mounting standard (EIA-ECA-310-E).
Capacity:	three LGX adapter plates; up to 72 optical fibers.
Materials:	1.5-mm (16-GA) CRS; black powder coating.
Cable management:	integral, rear.
Rack mounting:	set of USCU fasteners: 4 × #10-32 × 5/8 cross-recessed pan-head machine screws, black; 4 × #12-24 × 5/8 cross-recessed pan-head machine screws, black; 4 × #12 × 9/16 × 3/8 plain round washers, nylon, black.
Environmental:	operating temperature: -20 °C–+70 °C (-4 °F–+158 °F); operating humidity: ≤95 % RH non-condensing.
Dimensions:	W: 485 mm (19 in); H: 44.5 mm (1.75 in) [1 RMU]; D: 15 mm (0.6 in) panel frame; D: 125 mm (5 in) with CMB.
Weight:	0.6 lb (without cable management)



266-PMD01-1A3A (Blank)



266-PMD01-1A3A (Loaded 264-LAP04-2C6Y1)