

## Surface- and Wall-Mount Enclosures

## Adapter Plate Enclosures - EZX &amp; EZV Series

## ACCESSORIES for EZ-Xcess and EZ-View Series

## Fiber-Management/Splicing Stages for EZX/EZV Model 1A

- |                 |  |
|-----------------|--|
| 268-ACC03-11-00 | Stage with One Splice Holder, No Splice Protection Sleeves.        |
| 268-ACC03-11-CA | Stage with One Splice Holder, 6×40-mm Splice Protection Sleeves.   |
| 268-ACC03-11-EA | Stage with One Splice Holder, 12×40-mm Splice Protection Sleeves.  |
| 268-ACC03-12-00 | Stage with Two Splice Holders, No Splice Protection Sleeves.       |
| 268-ACC03-12-EA | Stage with Two Splice Holders, 12×40-mm Splice Protection Sleeves. |
| 268-ACC03-12-FA | Stage with Two Splice Holders, 24×40-mm Splice Protection Sleeves. |

Splice holder capacity: twelve 2.5-mm splice sleeves, stacked in two rows in six positions.

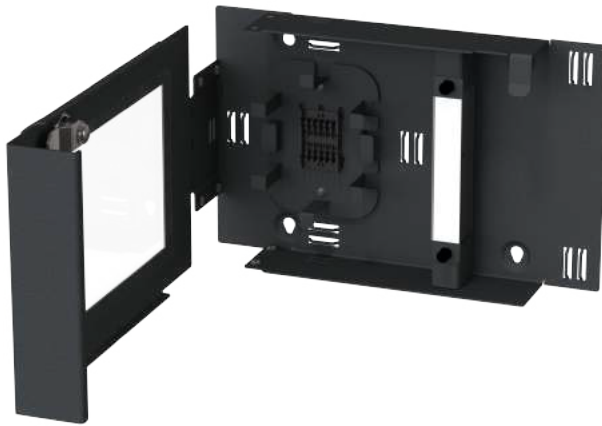
Threaded joints: SI (metric).



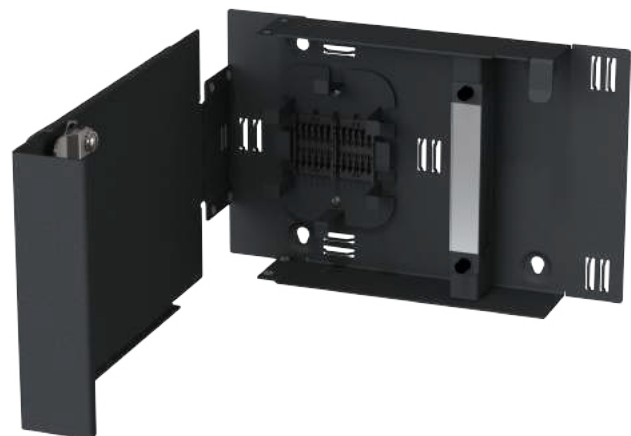
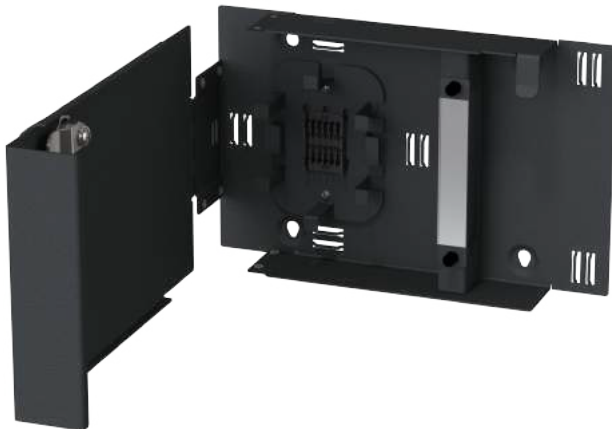
268-ACC03-11-00



268-ACC03-12-00



EZ-View w/ splice holders



EZ-Xcess w/ splice holders