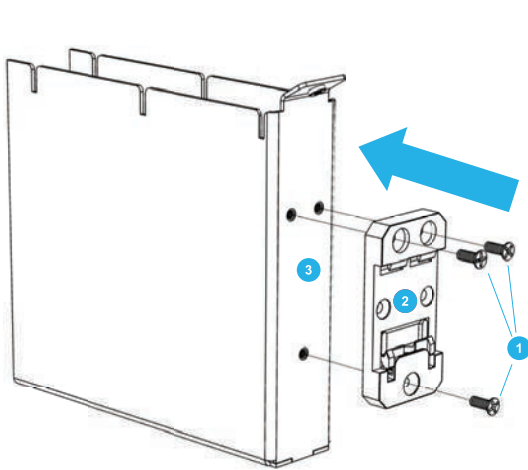
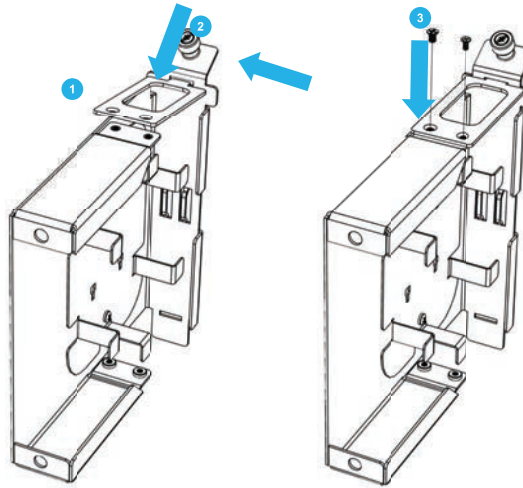


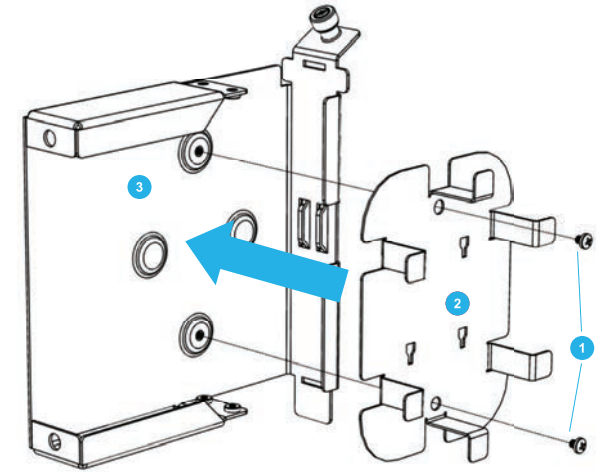
INSTRUCTION I 268-EZM01-1A DIN-RAIL MODULAR CASSETTE, EZ MOUNT, LGX X 1



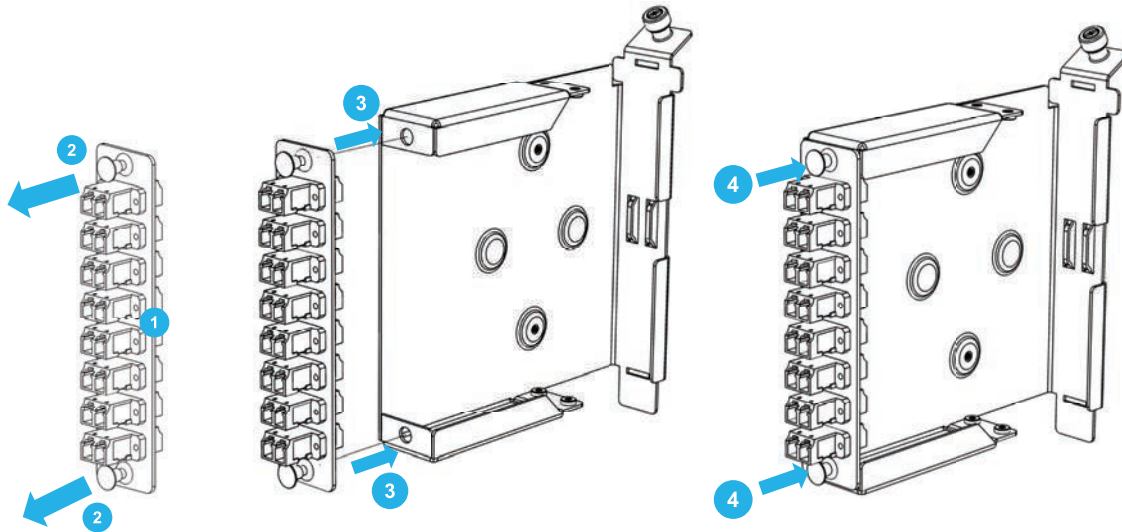
Using three screws 1 provided with cassette fix DIN-rail clip 2 to bay 3.



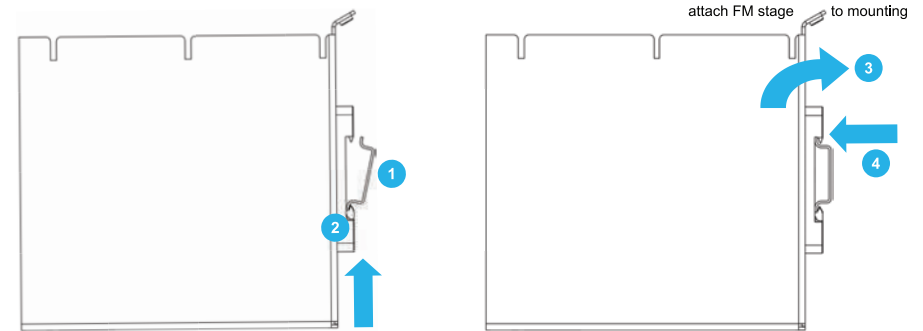
1. Insert ledge located on adapter plate's end 1 into slot 2 as shown.
2. Using two screws provided with adapter plate affix adapter plate to mounting module 3.



Using two screws 1 provided with cassette attach FM stage 2 to mounting module 3.

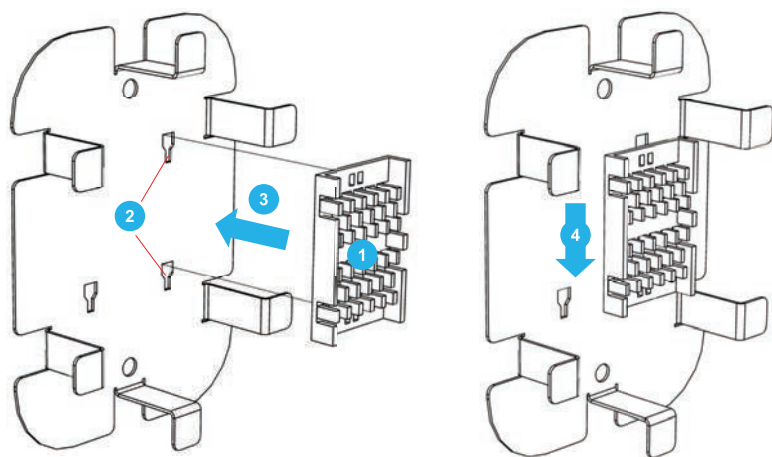
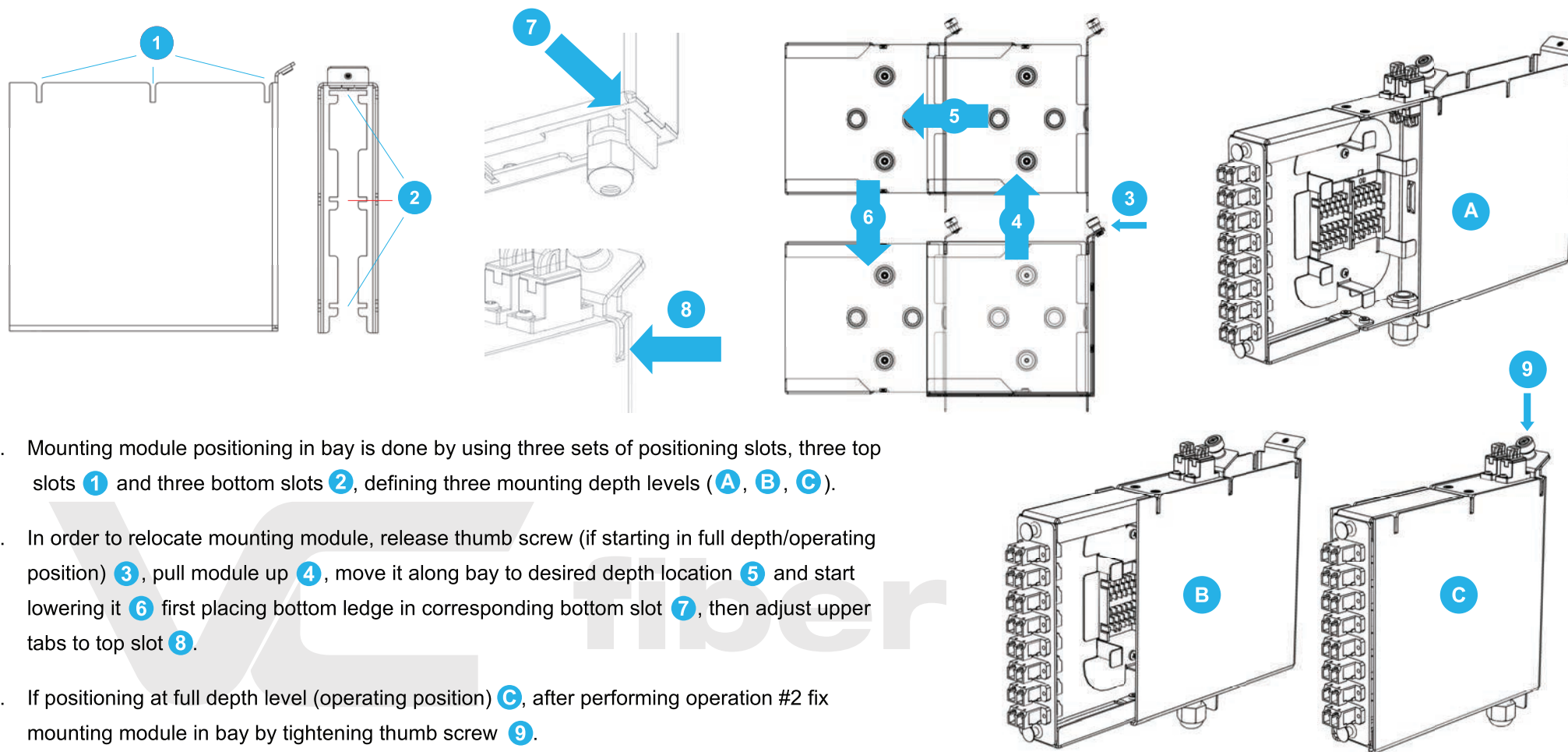


1. Release adapter plate's 1 panel fasteners 2 by pulling them out of their grommets.
2. Insert adapter plate's panel fasteners in corresponding openings in mounting module 3.
3. Lock adapter plate's panel fasteners by pushing their plungers until audible click 4.



Before starting mounting, check that DIN-rail clip is attached to bay with spring-loaded tooth at the bottom. It's IMPORTANT to mount cassette with its fixed tooth bearing load.

1. Hook DIN-rail clip on DIN rail 1 starting with its bottom tooth 2.
2. Move bay's upper portion toward DIN rail 3 until upper tooth locks on rail 4.



1. Align two splice holder's tabs located at holder's bottom surface **1** with two vertical mounting openings in fiber-management stage **2**.
2. Insert each holder's tab into larger portions of corresponding openings **3**.
3. Push holder as shown **4** until it locks securely in place.

Repeat steps #1 to #3 for second splice holder if necessary.

