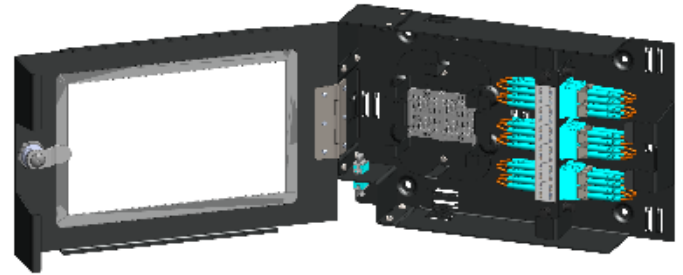




EZ-View



EZV Series – Optical Fiber Wall-Mount Enclosure, LGX, Viewport Door

	1-Position	2-Position	4-Position
Cam Latch	268-EZV01-1A1	268-EZV01-1B1	268-EZV01-1D1
Cam Lock	268-EZV01-1A2	268-EZV01-1B2	268-EZV01-1D2

Capacity:	Adapter plates	Fibers	Splice trays	Splice holders
1-position	1	up to 12	–	1 or 2
2-position	2	up to 24	1 or 2	–
4-position	4	up to 48	1 or 2	–

CHARACTERISTICS

- Adapter plate format: LGX.
- Access: single door; cam latch or cam lock options.
- Mounting: surface/wall; left- or right-hand independent.
- Cable management: cable entry port adapters; cable anchor points (bridge lances); set of cable ties and Velcro® tie wraps.
- Fiber management: FM spools (default); FM stage (optional).
- Labeling: removable label holder, plain paper inserts.
- Materials: 1.5-mm (15-GA) aluminum alloy; black powder coating.
- Environmental: operating temperature: -20 °C–+70 °C (-4 °F–+158 °F); operating humidity: ≤95 % RH non-condensing.



EZ-View

Dimensions:	1-position	2-position	4-position
Width:	280 mm (11 in)	300 mm (12 in)	300 mm (12 in)
Height:	180 mm (7 in)	280 mm (11 in)	280 mm (11 in)
Depth:*	50 mm (2 in)	50 mm (2 in)	90 mm (3.5 in)



* Without protruding parts of locks and latches.