

## COMPONENTS & ACCESSORIES

### Splicing

#### Mechanical Splice Holders

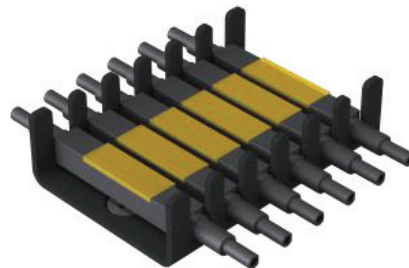
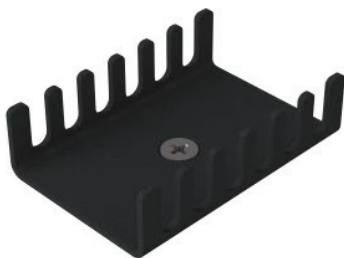
265-HLD11-2B4-x Optical fiber mechanical splice holder, 12-fiber

Substitute “-x” in PN with:

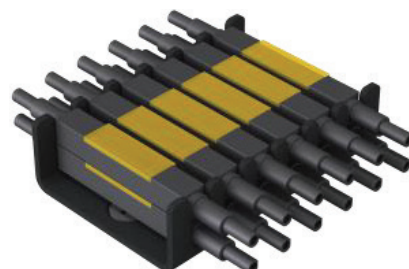
- “0”: no splices;
- “A”: 2 splices;
- “B”: 4 splices;
- “C”: 6 splices;
- “D”: 8 splices;
- “E”: 12 splices.

### CHARACTERISTICS

Compatible splice:	VC <sub>fiber</sub> 265-MEC01 mechanical splice.
Material:	aluminum alloy 5052-H32 or equivalent.
Finish, color:	black powder coating.
Mounting type:	M3 CSK machine screw (included); four two-sided adhesive pads.
Capacity:	6 slots × 2 splices/slot = 12 splices.
Dimensions:	26 mm × 40 mm × 11 mm (1.0 in × 1.6 in × 0.4 in.)
Weight:	3.9 g (0.14 oz) without splices.
Storage temperature:	-45 °C—+85 °C (-49 °F—+185 °F).
Operating temperature:	-40 °C—+70 °C (-40 °F—+158 °F).
Operating humidity:	≤95 % RH non-condensing.



SIX SPLICES



TWELVE SPLICES STACKED