

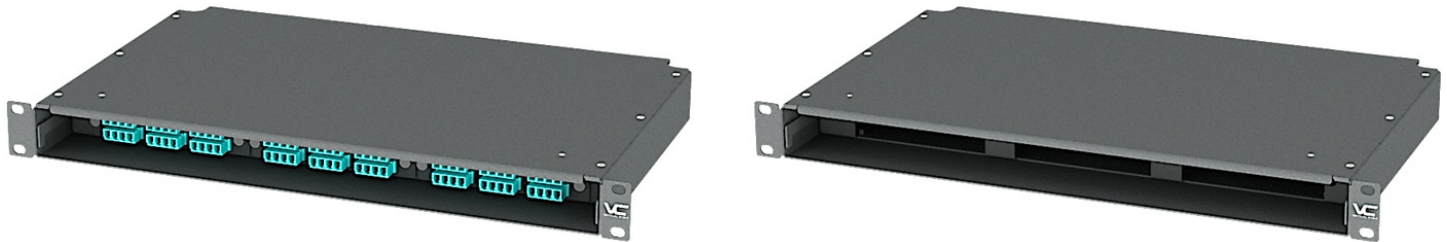
CROSS-CONNECT

Rack-Mount Enclosures

Adapter Plate Enclosures

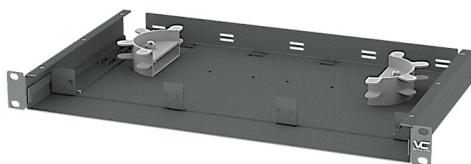


267-REB01-1C1 Optical Fiber Rack-Mount Enclosure, Budget-Series, LGX, Three-Position, 1 RMU

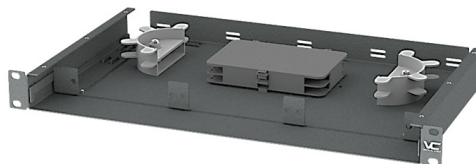


CHARACTERISTICS

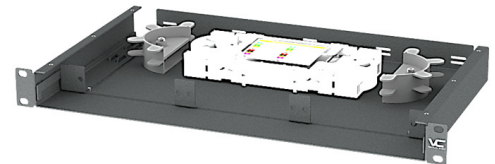
Form-factor:	19-in rack/cabinet mounting standard (EIA-ECA-310-E).
Mounting:	one depth level, flush with mounting flanges.
Capacity:	three LGX adapter plates; up to 72 optical fibers; up to two 24-fiber splice trays (265-CAS01-1B2 or 265-CAS01-2B2).
Access:	front and rear; retractable stage, front and rear.
Doors:	no doors.
Cover:	one-piece, removable (screw joints).
Cable management:	two rear cable entry openings; anchor bridge lances; set of cable ties and Velcro® tie wraps.
Fiber management:	spools, two levels.
Materials:	1.5-mm (15-GA) aluminum alloy; black powder coating.
Environmental:	operating temperature: -20 °C--+70 °C (-4 °F--+158 °F); operating humidity: ≤95 % RH non-condensing.
Dimensions:	width: flange: 483 mm (19.0 in); frame: 440 mm (17.3 in); height: 1 RMU 44 mm (1.75 in); depth: 285 mm (11.2 in).
Weight:	1.6 kg (3.5 lb).



with cover removed



with two 265-CAS01-1B2 installed



with two 265-CAS01-2B2 installed