

CAT5E CABLE

25 PAIR POWER SUM (CMR)

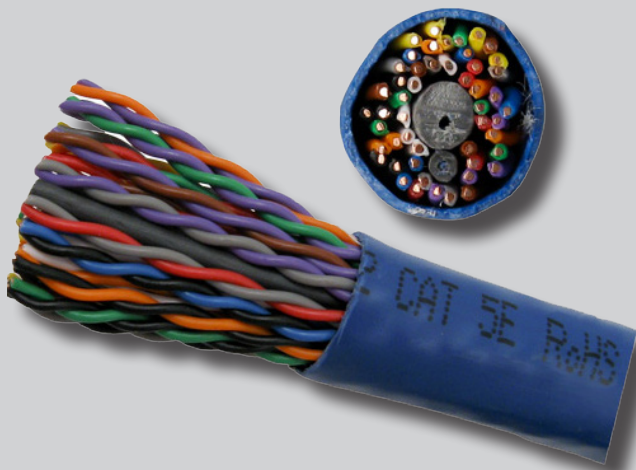


DESCRIPTION

CAT5E, 24 AWG, UTP, 25pair, Solid Bare Copper, CMR-Rated, PVC Jacket.

FEATURES

- High-Performance Data Cable
- 350 MHz Bandwidth for Data Applications, Fast Ethernet and 155Mbps TP-PMD/CDDI
- CAT5E Unshielded Twisted Pair
- Easily Identified Color-Striped Pairs
- 24 AWG Solid Copper Conductors
- Exceeds TIA/EIA-568B.2, ISO/IEC 11801
- ETL-Listed, CMR-Rated



SKU: 054-454BL

Technical Data

Rated Temperature	70 °C
Rated Voltage	60 V
Conductor	Solid Bare Copper
Size	24 AWG
Insulation	PE
Average Thickness (mm)	0.203
Insulation Diameter (± 0.01 mm)	0.91
Twisted Pair Diameter (± 0.01)	1.82
Filler	PVC
Assembly Diameter	10.45
Jacket	PVC
Average Thickness (mm)	1.00
Min. Point Thickness (mm)	0.90
Outer Diameter (± 0.30 mm)	12.50
Rip Cord	Yes
Color	Blue
Mechanical Characteristics	
Test Object	Jacket
Test Material	PVC
Before Tensile Strength (Mpa)	≥ 13.8
Aging Elongation (%)	≥ 100
Aging Condition ($^{\circ}\text{C}\times\text{hrs}$)	100x168
After Tensile Strength (Mpa)	$\geq 85\%$ of unaged
Aging Elongation (%)	$\geq 50\%$ of unaged
Cold Bend ($-20\pm 2^{\circ}\text{C}\times 4\text{hrs}$)	No Crack

Jacket Marking

VERTICAL CABLE UTP 25PR 24 AWG ETL CMR VERIFIED CAT5E 350MHz TIA/EIA - 568B.2 STANDARD RoHS COMPLIANT XXXFT

SEQUENTIAL FOOT MARKERS ON JACKET

VERTICAL CABLE

954 454-3554 Florida Office
951 696-7772 California Office



www.verticalcable.com

Rev. 02/2017
Subject to change without notice.

CAT5 ENHANCED CABLE 25 PAIR UTP POWER SUM (CMR)

PERFORMANCE

Electrical Characteristics:

1.0-100MHz Impedance (Ohms)	100±15
1.0-100MHz Delay Skew (ns/100m)	<=45
Pair-to-Ground Capacitance Unbalance (pF/100m)	<=330
Max. Conductor DC Resistance 20°C (ohms/km)	95
Resistance Unbalance (%)	<=5

Frequency (Mhz)	Return Loss (Min dB)	Attenuation Max	Next (ns/100m)
0.772	19.4	1.8	67.0
1	20.0	2.0	65.3
4	23.0	4.1	56.3
8	24.5	5.8	51.8
10	25.0	6.5	50.3
16	25.0	8.2	47.3
20	25.0	9.3	45.8
25	24.3	10.4	44.3
31.25	23.6	11.7	42.9
62.5	21.5	17.0	38.4
100	20.1	22.0	35.3

Frequency (Mhz)	PSNext (Min dB)	ELFEXT Min(db/100m)	DELAY Max(ns/100m)
0.772	64.0	66.0	575.0
1	62.3	63.8	570.0
4	53.3	51.7	552.0
8	48.8	45.7	546.7
10	47.3	43.8	545.4
16	44.3	39.7	543.0
20	42.8	37.7	542.0
25	41.3	35.8	541.2
31.25	39.9	33.9	540.4
62.5	35.4	27.8	538.6
100	32.3	23.8	537.6

VERTICAL CABLE

954 454-3554 Florida Office
951 696-7772 California Office

www.verticalcable.com

Rev. 02/2017

Subject to change without notice.