

# CAT6A 24 PORT (SHIELDED) PATCH PANEL (19" RACKMOUNT)

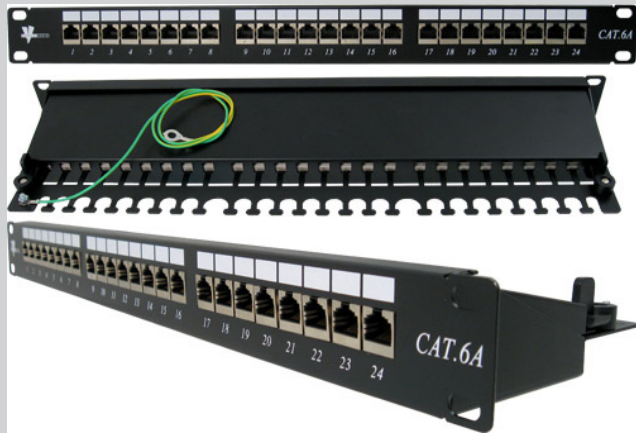


## DESCRIPTION

CAT6A Shielded 24 Port Patch Panel. Krone Type Termination. 19" Rack Mountable.

## FEATURES

- Shielded to protect against EMI, RFI
- High Impact Patch Panel
- Tough Black Painted Finish
- Number Labeled for Easy Identification
- 568A & 568B Wiring Color Codes
- Krone Type Termination
- ISO/IEC 11801 Class EA, ANSI/TIA/EIA 568C.2
- RoHS Compliant



## SKU: 042-C6A/24

### Panel Housing

Material	SECC
Thickness	1.2 mm
Plated	Black
Dimension	EIA-310D (1U)
Dust Cover	Yes

### IDC

IDC Housing	Krone Type
IDC Terminal	PC+Glass, UL 94V-2
Compatibility	Phosphor Bronze, Tin Plated
	22-26 AWG Solid Wire

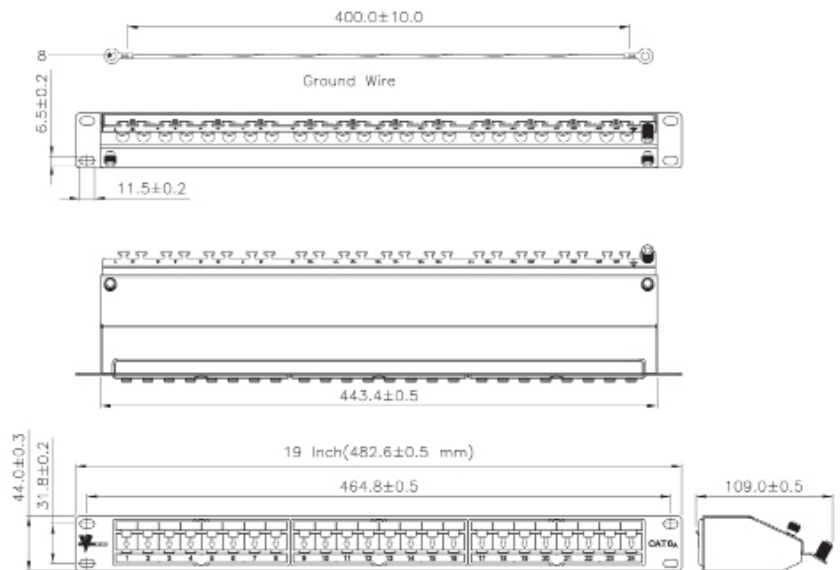
### RJ45 Jack

Contact Material	Phosphor Bronze w/ Nickel Plated
Contact Finish	50μ Gold Plated (Plug contact area)
Jack Housing	PBT-Glass Fiber, UL 94V-0
Shielding	Bronze with Nickel Plating

### Printed Circuit Board

Material	FR4, UL 94V-0
----------	---------------

Operating Temp. -10° to 60° C  
Accessories: Ground Wire and Cable Ties



**VERTICAL CABLE**

951.696.7772 California  
800.749.2447 Florida  
845.391.8318 New York



[www.verticalcable.com](http://www.verticalcable.com)

Rev. 06/2019  
Subject to change without notice.