

# EZ MOUNT SERIES DIN-RAIL MODULAR CASSETTE



**SKU: 268-EZM01-1A**

## CHARACTERISTICS

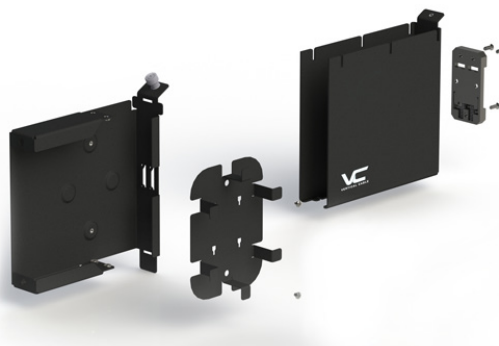
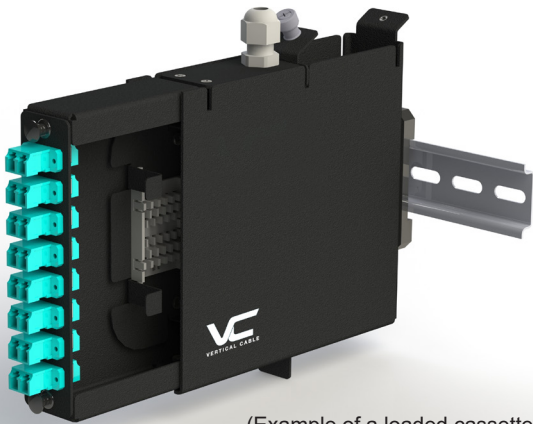
Compatibility:	All Vertical Cable 264-MAP and 264-LAP series adapter plates.
Mounting:	35-mm DIN rail; detachable DIN-rail clip.
Materials:	aluminum alloy; black powder coating.
Capacity:	one LGX adapter plate; up to 24 fibers (264-LAP series adapter plates); up to 6 keystone modules (264-MAP01-1A06 adapter plate); 1 or 2 splice holders, 12 fibers per holder, 24 fibers total max; 1 or 2 two cable entry point adapters (see accessories).
Cable management:	cable anchor point (bridge lance); fiber/splice management stage; set of cable ties.
Dimensions:	width: 35 mm (1.4 in) [2 DU]; height: 170 mm (6.7 in); depth: 150 mm (6 in).
Compliance:	IEC/EN 60715; DIN 43880; ANSI/TIA-568.3-D; GR-769; Directive 2011/65/EU Am. 2015/863/EU (RoHS2).
DIN-rail clip:	material: fiberglass-reinforced nylon 66 (PA66, GF: 30 %); width: 35 mm; mounting: spring-loaded latch; compliance: Directive 2011/65/EU Am. 2015/863/EU (RoHS2).
Environmental:	operating temperature: -10 °C -60 °C (14 °F-140 °F); storage temperature: -40 °C-70 °C (-40 °F-158 °F); operating RH: 93 % max (non-condensing).

## DESCRIPTION

**DIN-Rail Modular LGX Optic Fiber Cassette.**  
Mountable universal cassette, compatible with standard LGX-format adapter plates.

## FEATURES

- Lightweight Aluminum alloy with corrosive-resistant heavy-duty black powder coating
- 35-mm DIN-rail mountable bay
- Three different positions within the bay: full depth, half-depth, “zero” depth
- Changing depth positions doesn’t require disconnecting distribution cables
- Flexibility in application configurations
- ANSI/TIA-568.3-D, GR-769, RoHS 2
- Applications: Industrial Networks, Optical fiber and multimedia cabling distribution nodes



Kit includes:

- Bay × 1;
- Cassette × 1;
- FM Stage × 1;
- DIN-Rail Clip × 1;
- Cable Tie × 2.

\*Adapters and plates sold separately

**VERTICAL CABLE**

951.696.7772 California  
800.749.2447 Florida  
845.391.8318 New York

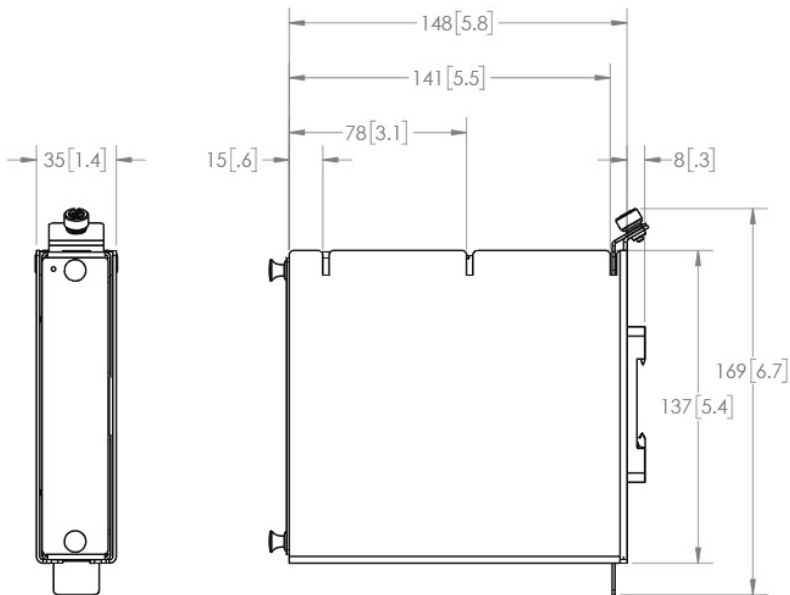


[www.verticalcable.com](http://www.verticalcable.com)

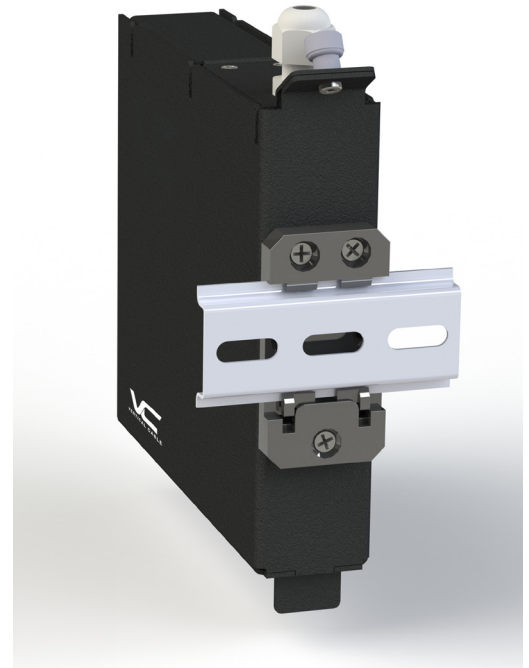
Rev. 02/2021

Specs subject to change without notice.  
It is the sole responsibility of the user to have the most current specs.

# EZ MOUNT SERIES DIN-RAIL MODULAR CASSETTE



CASSETTE + BAY ASSEMBLY, SHOWN WITH BLANK LGX ADAPTER PLATE



## Mounting dimensions

Height	Width	Depth	Weight
5.5 in	1.4 in	6 in	12.5 oz



Plate materials:	aluminum alloy, black powder coating		
Plate dimensions:	60 mm×30 mm (2.4 in×1.2 in)		
Plate opening:	40 mm×20 mm (1.6 in×0.8 in)		
Grommet material:	TPE (UL 94-V2)		
Grommet size:		cable O.D.: up to 8 mm (0.3 in)	cable O.D.: up to 12 mm (0.5 in)*
Gland form-factor:	M12/PG7		
Gland material:	polyamide/neoprene		
Gland size:	cable O.D.: up to 6.5 mm (0.25 in)		

\*268-EZM01-1A05 due to its grommet size can be used only in the top position.

## VERTICAL CABLE

951.696.7772 California  
800.749.2447 Florida  
845.391.8318 New York



[www.verticalcable.com](http://www.verticalcable.com)  
Rev. 02/2021




Subject to change without notice

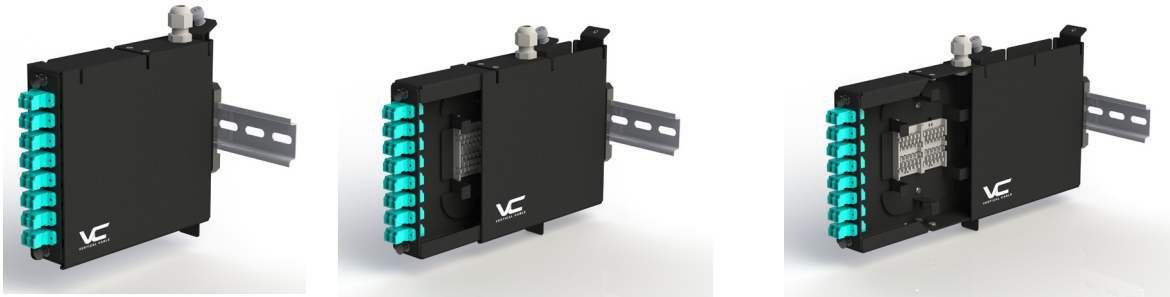
# EZ MOUNT SERIES DIN-RAIL MODULAR CASSETTE

Accessories	
268-EZM01-1A00	DIN-Rail Modular Cassette, EZ Mount Series, Cable Entry Adapter, Blank
268-EZM01-1A01	DIN-Rail Modular Cassette, EZ Mount Series, Cable Entry Adapter, Pass-Through
268-EZM01-1A02	DIN-Rail Modular Cassette, EZ Mount Series, Cable Entry Adapter, MPO×1
268-EZM01-1A03	DIN-Rail Modular Cassette, EZ Mount Series, Cable Entry Adapter, MPO×2
268-EZM01-1A04	DIN-Rail Modular Cassette, EZ Mount Series, Cable Entry Adapter, 15-mm Grommet
268-EZM01-1A05	DIN-Rail Modular Cassette, EZ Mount Series, Cable Entry Adapter, 20-mm Grommet
268-EZM01-1A06	DIN-Rail Modular Cassette, EZ Mount Series, Cable Entry Adapter, M12/PG7 Cable Gland
268-EZM01-1A11	DIN-Rail Modular Cassette, EZ Mount Series, Splice Holder, Set of 1*
268-EZM01-1A12	DIN-Rail Modular Cassette, EZ Mount Series, Splice Holder, Set of 2**

\*Includes twelve 2.5×40-mm splice protection sleeves (265-SLV01-3A).

\*\*Includes twenty-four 2.5×40-mm splice protection sleeves (265-SLV01-3A).

LGX Adapter Plates	
264-MAP00-0000	Blank LGX Adapter Plate 
264-MAP01-1A06	Keystone Module LGX Adapter Plate 
264-LAP01-1A06A	Optical Fiber Adapter Plate (various options) 



This modular design allows to place the cassette in three different positions within the bay:

1. Full depth: operating position - cassette is completely covered and protected by the bay and fixed to it with the help of a thumb screw.
2. Half-depth: this position allows to perform manipulations on the LGX adapter plate connections without removing the cassette from the bay.
3. "Zero" depth: all cassette internal components can be accessed for servicing and adjustments.

**VERTICAL CABLE**

951.696.7772 California

800.749.2447 Florida

845.391.8318 New York



**RoHS**

[www.verticalcable.com](http://www.verticalcable.com)

Rev. 02/2021

Subject to change without notice