

Termination instructions for CAT5E, CAT6, CAT6A Shielded Patch Panels

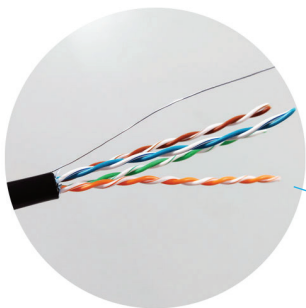
CAT5E: 24 Port (1U) 041-372/S/24 and 48 Port (1U) 041-373/S/48

CAT6: 24 Port (1U) 042-377/S/24 and 48 Port (1U) 042-378/S/48

CAT6A: 24 Port (1U) 042-C6A/24 and 48 Port(1U) 042-C6A/48

1

Remove 2 ½ to 3 inches of the jacket from the cable. Be sure not to cut the drain wire.



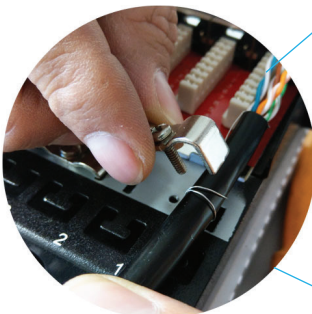
2

Remove the bracket that holds the cable in place from the panel housing.



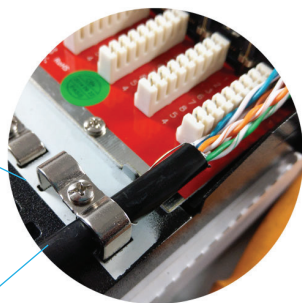
3

Set the cable jacket end as close to the termination block. Loop the drain wire around the cable at the point that the cable comes in contact with the bracket.



4

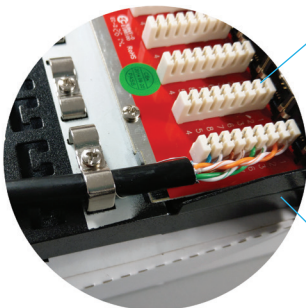
Attach the bracket to the panel to hold the cable in place. Make sure the ground wire makes firm contact with the bracket and the panel surface.



5

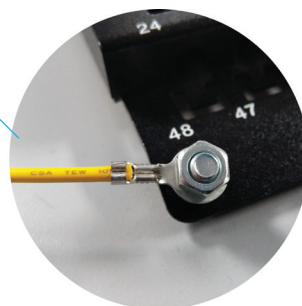
Terminate conductors to desired color code (568A or 568B).

Note: Krone tool blade needed for termination. Do not use 110 punch blade – this will damage the termination blocks.



6

Connect Ground wire to the panel and to the rack/grounding block.



At Vertical Cable #WeHaveItAll:



Tie Wraps, Velcro Wraps
045 Series



Punch-Down Tool, Stripper
078-1028, 078-1023



Wall Mounts
047-WFM, WFJ Series