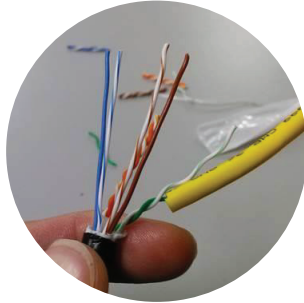


# Termination instructions

## for 012-021 RJ45 modular plug

1

Start with removing the outer jacket and preparing the conductors. Use a piece of the cable jacket to help unwind and straighten the conductor.



4

Cut extra cable leaving about 3/4"



2

Line up your color code and cut the conductor at an angle. This will help while inserting the load bar.



5

Insert to housing and terminate using the proper tool.

Note: Before crimping the plug remove the center teeth/cast from the termination tool.

This will prevent damages to the housing case.

Tool used: 078-1017



3

Note: pin 1 – orange/white conductor needs to be inserted on the bottom left of the load bar. If reversed the conductors will not line up with the termination points.



6

Crimp and fold down the cable holder (located on back of connector) to secure the ground wire and cable

