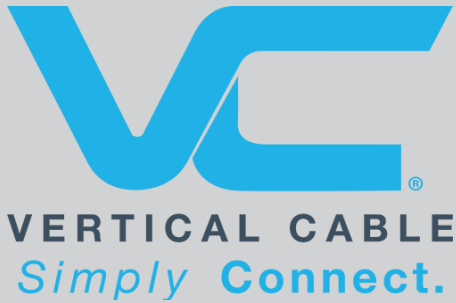


# 1U VENTED SLIDING SHELF



**SKU: 047-WSS-3551**

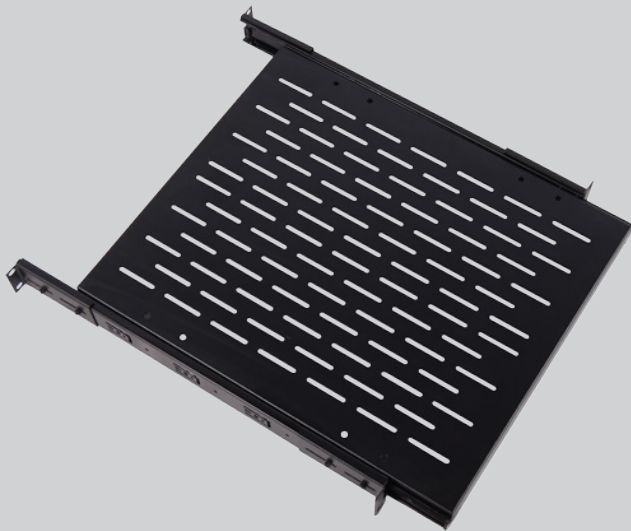
Steel Thickness (mm)	1.5
Height (in)	1.75
Width (in)	19
Depth	
Folded(in)	19.7
Extended(in)	19.7-36
Weight (lb)	12
Color	Black
Capacity(lb)	50

## DESCRIPTION

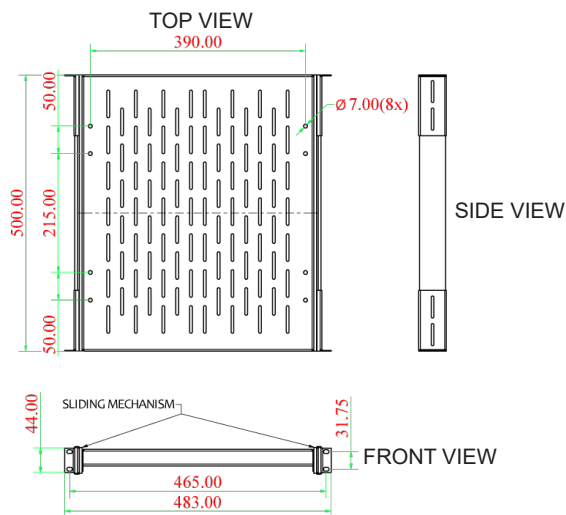
1U Vented Sliding Shelf, 19", Black

## FEATURES

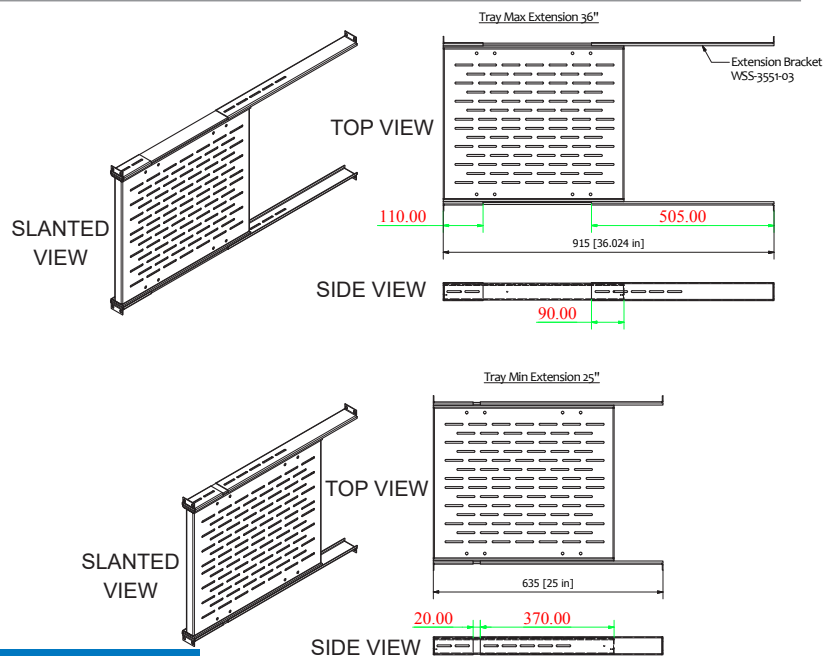
- Fits most standard 19" Racks and Wall Mounts, 4-point mounting
- Made from 1.5mm EG Steel
- Comes with 8 sets of M6 Washers/Screws/ Cage Nuts
- Loading Capacity 50lbs
- Folded depth: 19.7"
- Extended depth: 19.7" to 36"
- Suitable for network electronics/components & keyboards



SHELF - FOLDED



SHELF - EXTENDED



**VERTICAL CABLE**

951.696.7772 California  
800.749.2447 Florida  
845.391.8318 New York

[www.verticalcable.com](http://www.verticalcable.com)

Rev. 05/2018

Specs subject to change without notice.

It is the sole responsibility of the user to have the most current specs.